

First mini-workshop bringing together ESSIC/CICS, EMC and CPC scientists

Cooperative Institute for Climate and Satellites- Maryland

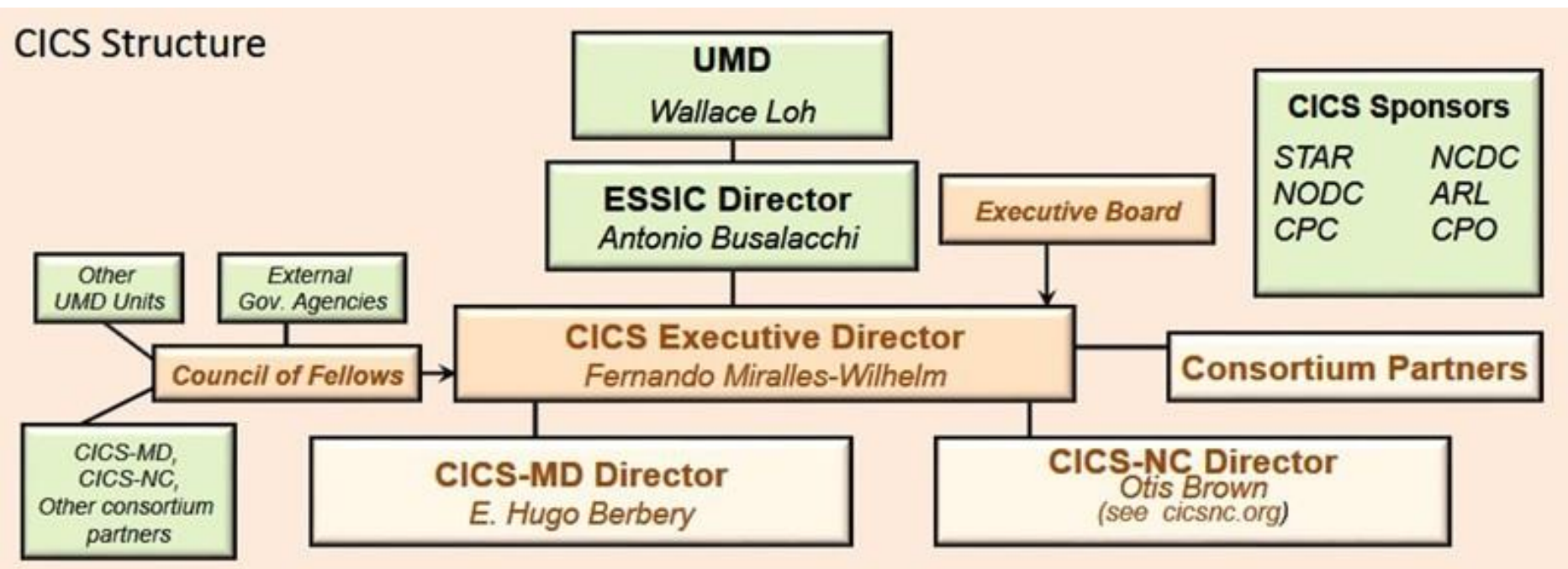
6 May 2015

essic.umd.edu

cicsmd.umd.edu



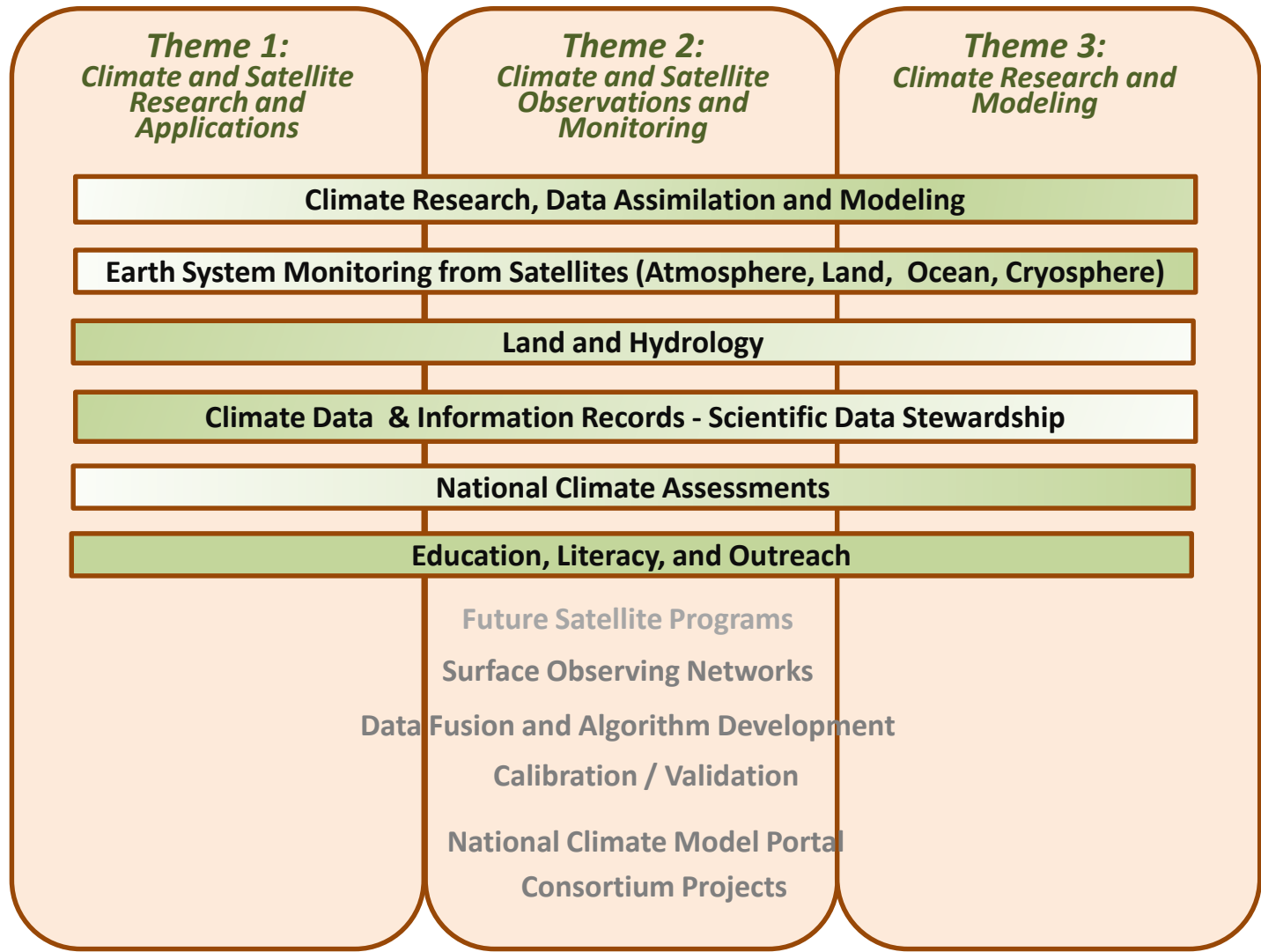
Organizational structure



CICS performs collaborative research aimed at **enhancing NOAA's ability to use satellite observations and Earth System models** to advance the national climate mission, including **understanding, monitoring, predicting and communicating information** on climate variability and change.



Research areas



Why are we meeting?

- To identify common interests,
- To build a collaboration that maximizes the strengths of a partnership between university researchers and government scientists,
- To accelerate R2O (and O2R) activities.

What do we expect of the meeting?

- Identify those areas that are a priority for CPC and EMC

What is the plan after the meeting?

- Advance on a strategy for ensuring continued communications,
- Develop a roadmap that will enable:
 - A quick implementation of collaborations
 - Construct a long term partnership